



CHEVROLET  
**SILVERADO 1500**

**\$26,520\***  
Starting MSRP

**17/22 MPG**  
City/Hwy

**9,400 LBS**  
Max Towing

**7,000 LBS**  
Max GVWR

**TRUCK BUILT FOR WORK**

**2WD OR 4WD CAPABILITY**

Engineered for fleet dependability, even during the most grueling jobs, the 2015 Chevrolet Silverado's high-strength steel body and weight-saving aluminum engine block deliver exceptional performance every time. A spacious hauling bed, powerful towing and on-site mobile office abilities further enhance the Silverado's level of productivity for completing a wide range of fleet tasks.

[VIEW SILVERADO MODELS](#)



**POWERTRAIN**

- 4.3L V6 EcoTec engine
- Available 5.3L V8 EcoTec engine
- Direct injection w/FlexFuel capacity

[More Powertrain Features](#)

**TOWING & HAULING**

- Towing up to 9,400 lbs
- Integrated trailer brake controller
- Cargo volume on std. bed of 61 ft<sup>3</sup>

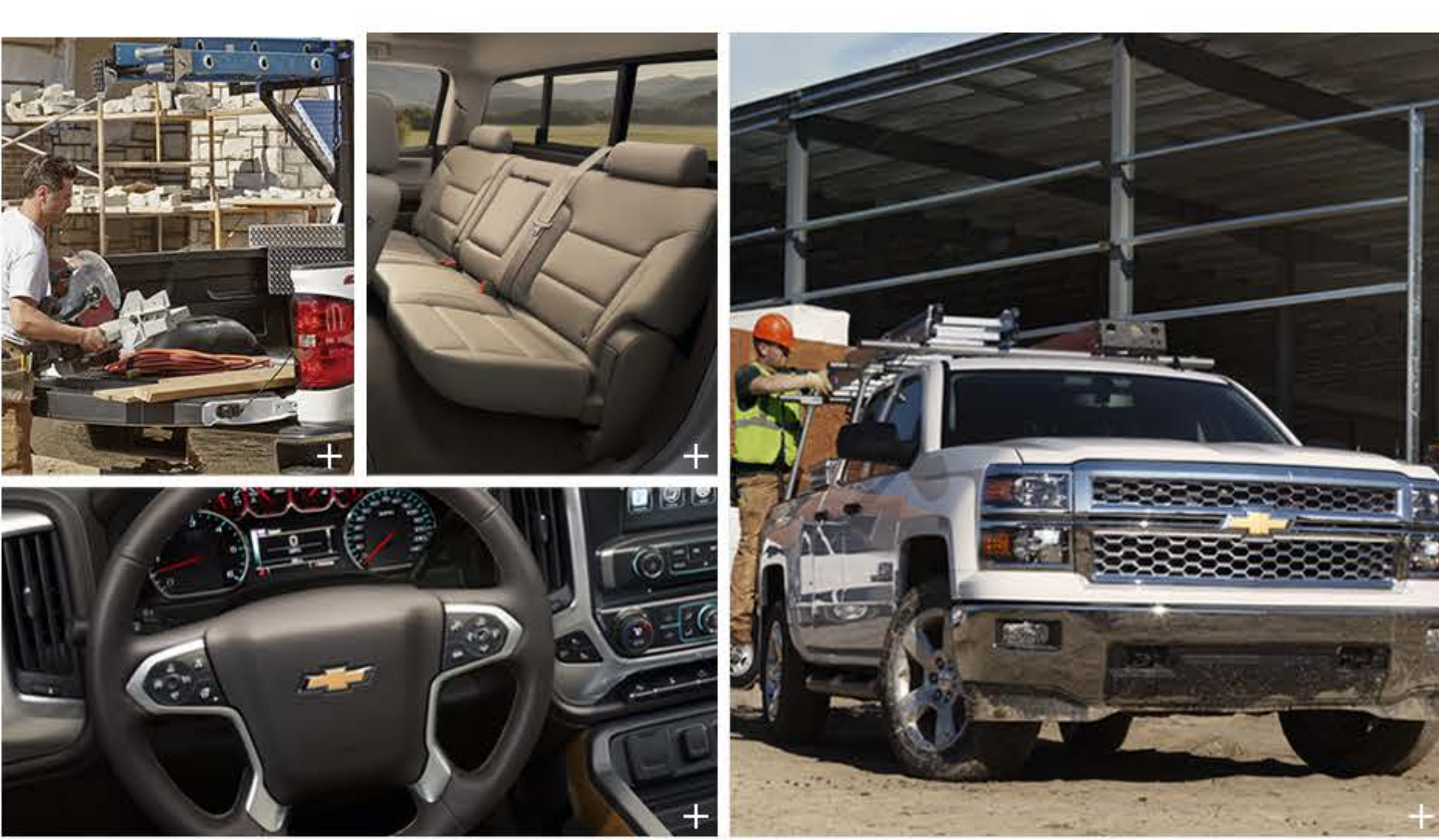
[More Towing Features](#)

**TECHNOLOGY**

- Available 4G LTE Wi-Fi
- Available OnStar
- Available Bluetooth wireless technology

[More Technology Features](#)

\*Features based on Silverado 1500 TWT model unless otherwise noted.



**MOVING PEOPLE & CARGO**

Check out the various body styles and box specs for the Silverado 1500.

Body/Box	Passengers	Cargo Volume	Cargo Box Length at Floor
Regular Cab Std. Box	2	61 <sup>3</sup>	78.87"
Regular Cab Long Box	2	76.3 <sup>3</sup>	97.77"
Crew Cab Short Box	5	53.4 <sup>3</sup>	78.87"
Crew Cab Std. Box	5	61 <sup>3</sup>	78.87"
Double Cab Std. Box	5	61 <sup>3</sup>	78.87"

[COMPARE TRUCK STYLES](#)

**STAY CONNECTED**

Access the best vehicle technology to support modern fleets.



**OnStar**

- Contact an experienced advisor
- Access powerful information
- Ensure safety of fleet drivers

**4G LTE**

- Connect to built-in Wi-Fi
- Optimize technology usage
- Promote fleet efficiency

**ULTIMATE UTILITY FOR ANY JOB**

The Silverado 1500 has many popular upfit options. Here are a few of them:



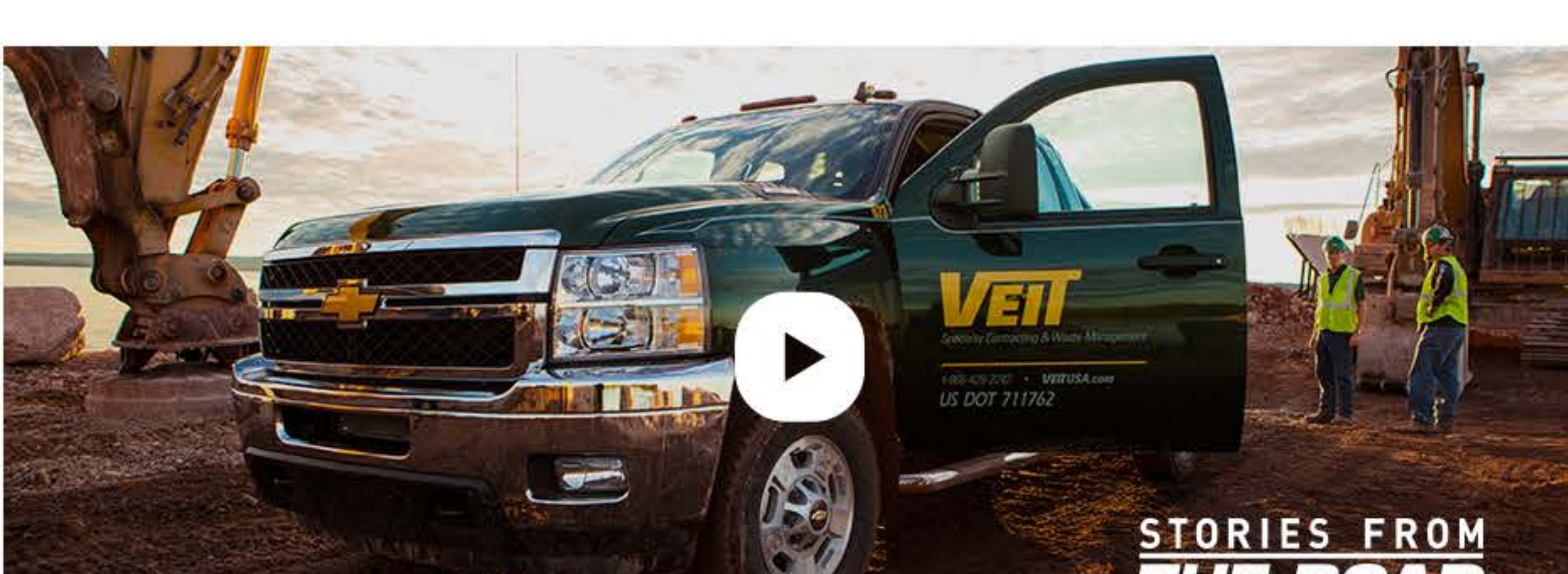
**Snow Plow/Spreader**  
[Upfit Details](#)



**Utility/Service Body**  
[Upfit Details](#)



**Platform/Stake Body**  
[Upfit Details](#)



**STORIES FROM THE ROAD**

**"We need durable products because we have rugged projects."**

-GREG BOELKE, VEIT & COMPANY INC., ROGERS, MN

[VIEW MORE VIDEOS](#)

**PLAN YOUR BUDGET**

- Price this vehicle
- Compare with your GM Fleet Rep
- Download a quote

[Build & Price](#)

**GET IN TOUCH**

- Talk to a GM Fleet Rep
- Talk to a Business Elite Dealer
- Search by region

[Contact](#)

**FIND A SILVERADO 1500**

- Check available inventory
- Compare features
- Quickly replace a fleet vehicle

[Locate a Vehicle](#)

**YOU MAY ALSO LIKE**



**Silverado 2500HD**  
from \$32,980



**Silverado 3500HD**  
from \$34,080



**Sierra**  
from \$27,020

<b>VEHICLES</b>	<b>SPECIALTY VEHICLES</b>	<b>SERVICES</b>	<b>TOOLS</b>	<b>MORE FLEET</b>	<b>CONTACT US</b>
Cars	Utility/Service	OnStar	Build & Price	Resources	Fleet Account Executives
Crossovers/SUVs	Van Body	Certified Service	Locate a Vehicle	News	District Sales Managers
Trucks	Shuttle Bus	Commercial Link	Request a Quote	2016 Fleet Guide	Cadillac Professional
Vans	School Bus	Warranty	Offers & Incentives	Owners Manuals	Dealers
Police	Platform/Stake	Parts	Competitive Compare	Fleet Events	Commercial Sounding Board
Future Vehicles	Ambulance/Rescue	Scheduled Maintenance Plan	Vehicle Order Status	Stories from the Road	Government Sales
	Dump Truck	GM Remarketing	Vehicle History		Contacts
	Snowplow Spreader	Technical Training	Warranty		Global Fleet
	Conversion Van		Owners Manuals		
	Mobility		Online Order Guide		
	Limo & Funeral		GM FleetTrac		
			View All Tools		

**STAY IN TOUCH WITH GM FLEET**

Get updates on new General Motors vehicles, events and industry news.

Your Email

**FOLLOW US ON**



CHANGE LANGUAGE



**Disclosures**

\* Lorem ipsum dolor sit amet, consectetur adipiscing elit, sed do.  
1. Lorem ipsum dolor sit amet, consectetur adipiscing elit, sed do.  
2. Aenean euismod bibendum laoreet. Proin gravida dolor sit amet lacus accumsan et viverra justo commodo.  
3. Aenean euismod bibendum laoreet.